



Field Feature Bill of Material (FFB/M)

Convert a Low Speed Adapter Type 1 (FC 5410)

to a Low Speed Adapter Type 2 (FC 5440)

Written by	Housieaux G
Checked by	Housieaux G
Approved by	Vignolo R
Reviewed by	Tlsty T

PN 80G1453 1 of 18	EC E27799 08AUG95				
-----------------------	----------------------	--	--	--	--



PN 80G1453 2 of 18	EC E27799 08AUG95				
-----------------------	----------------------	--	--	--	--

BEFORE INSTALLATION (Steps 1- 8)

Net Priced Feature

All parts removed from this machine are IBM property and must be returned to IBM.

1.0 Machines affected:

2220 MODEL 300, 500 or 501

2.0 Prerequisite/Concurrent/Companion:

2.1 Prerequisite:

None

2.2 Concurrent - (Must be installed together)

None

2.3 Companion - (May be installed separately)

None

3.0 B/M(S) to be installed:

3.1 Install the following B/Ms:

B/M 80G1453 - Convert a LSA1 to a LSA2
(FC 5410 to 5440)

4.0 Preparation.

1. Familiarize yourself with the purpose and details of the installation instructions prior to obtaining the customer machine time commitment.
2. Check all the items and count the parts listed on the B/M to be installed to determine that all the parts were received
3. Additional info :
 - Ask the customer or Network operator for the slot where the TPA will be exchanged.
 - NCT will be updated as part of this MES to take into account the new TPA type.
 - It is the customer responsibility to export the modified configuration to the focal point if required.
 - The resources driven by the TPA will be OFF during the time of the feature exchange. Inform the network operator to deactivate the resources before to remove the LSA1.
4. Before starting the installation of this MES, call your TNSC (Network Support Center)

5.0 Programming.

NCT has to be updated to implement this change.

6.0 Purpose and description.

6.1 Purpose.

Provide more resources on a Low Speed TPA.

6.2 Description.

Replace a LSA1 by a LSA2 module.

PN 80G1453 3 of 18	EC E27799 08AUG95				
-----------------------	----------------------	--	--	--	--



7.0 Installation Time.

FFB/M	Machine Hrs.	System Hrs.
80G1453	0.5	00.0
Preparation	0.3	
-----	---	
Total	0.8	

8.0 Special tools and/or materials required:

ESD kit P/N 6428316

INSTALLATION (Steps 9-11)

9.0 Safety.

Review **Safety Notices** and the **Safety Inspection Procedures** located at the beginning of the *IBM 2220 Nways BroadBand Switch Service Guide SY33-2106*.



2220 Front View.

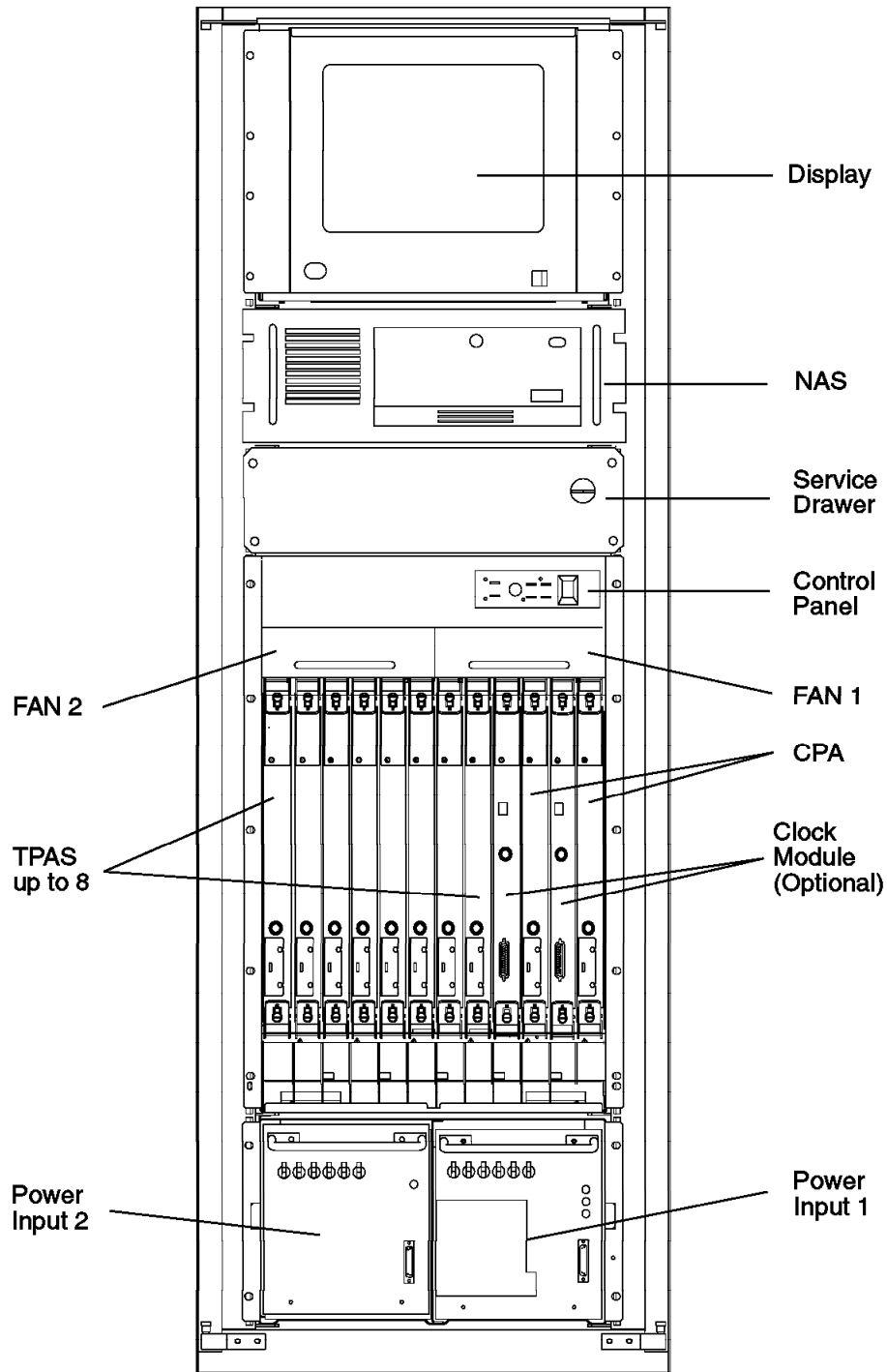


Figure 1. 2220 Front View, Location

PN 80G1453 5 of 18	EC E27799 08AUG95				
-----------------------	----------------------	--	--	--	--



2220 Rear View.

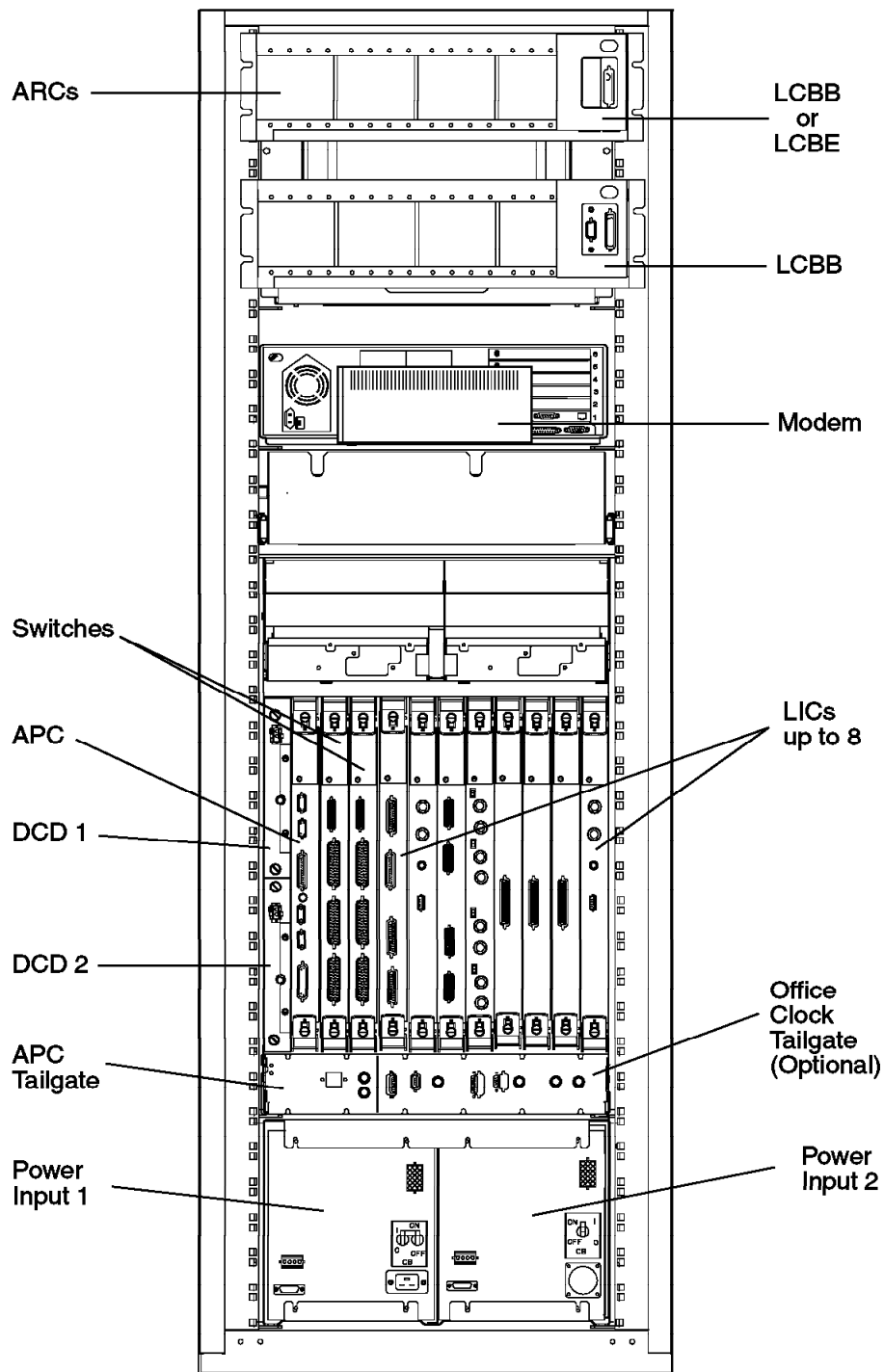


Figure 2. 2220 Rear view, Location



10.0 Details of installation.

After the TPA exchange you will update the configuration (Working) to reflect the new TPA type. To prevent any mismatch between the configuration files (Active and Working) you are going to export and Import the Active configuration before any changes

- ___ 1. If the *NWays Switch* screen (See Figure 4) is displayed go to 10.1, "Export the Active Configuration."
Otherwise proceed.

Note: : Ensure that the *NWays Switch Resource Control Local* screen (See Figure 4) is not *Minimized* . Press *Control* and *Escape* keys together to display the *Window List*.

- ___ 2. On the NAS desktop, **Double click** on the **NWays Switch Services** Icon.

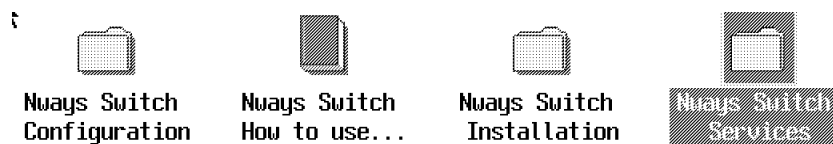


Figure 3. NAS desktop

- ___ 3. On the **Nways Switch Services-Icon view**, Double Click on **Nways Switch Resource Control Local**

10.1 Export the Active Configuration.

- ___ 1. Click on **Nways Switch** on the menu bar,

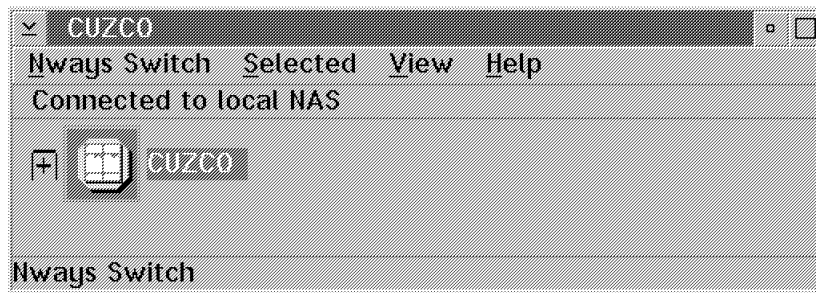


Figure 4. NWays Switch screen.

- ___ 2. Click on **Export Configuration file**, then on **Whole NWays Switch**.

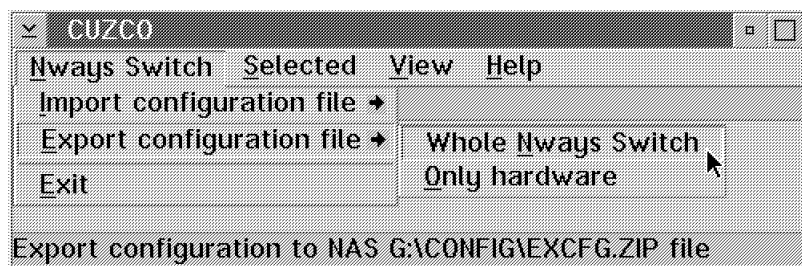


Figure 5. Export Active configuration.

- ___ 3. On the message window, **Click** on **OK**.
- ___ 4. Wait for the completion message.
The *Active Configuration* is exported to the **G:\CONFIG\EXCFG.ZIP** file.
Click on **OK**.

10.2 Import the Active Configuration

- ___ 1. On the NAS desktop, **Double Click** on the **Nways Switch Configuration** Icon.

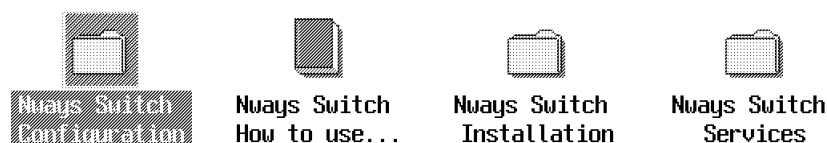


Figure 6. NAS desktop

- ___ 2. On the Icon View, **Double click** on **NCT** Icon. (N Ways Switch Configuration tool).

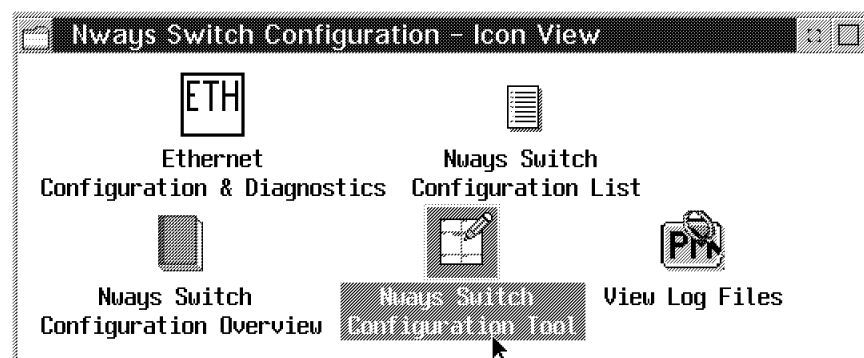


Figure 7. N Ways Switch Configuration -Icon view.

- ___ 3. On the **N Ways Switch Configuration Tool** window, **Click** on **Selected** on menu bar.

Notes:

- a. Ensure there is only one Icon on the window, otherwise select the Icon of the N Ways Switch you are working on.
- b. In certain configurations, the screen may be empty, (no Icon displayed). In such a case, go to step 6.

PN 80G1453 8 of 18	EC E27799 08AUG95				
-----------------------	----------------------	--	--	--	--

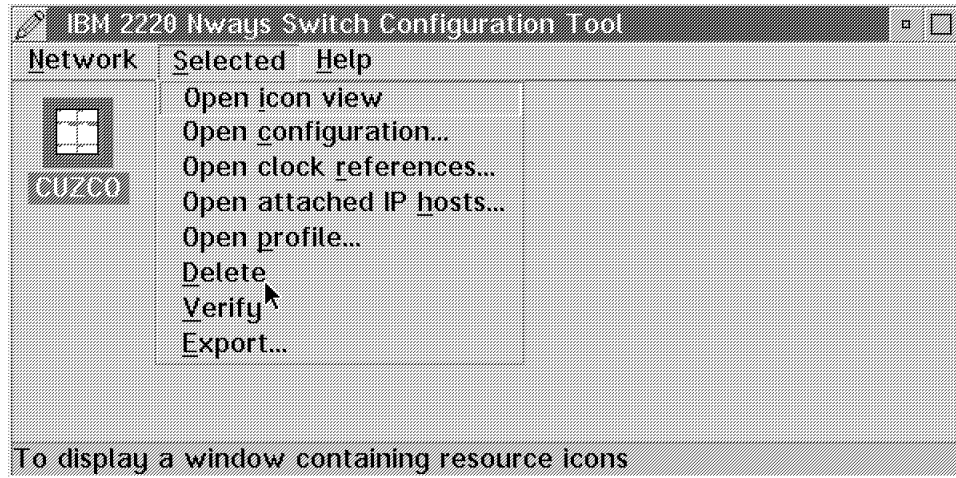


Figure 8. Delete the current Configuration.

- ___ 4. **Click on Delete** to delete the current configuration.
- ___ 5. **Click on Yes** to *Confirm the Delete*.
- ___ 6. When the *Delete* is completed (The ICON is erased from the screen) **Click on Network** on menu bar.
- ___ 7. **Click on Import new Nways Switch from**
- ___ 8. **Click on N Ways Switch Configuration Tool File Format.**

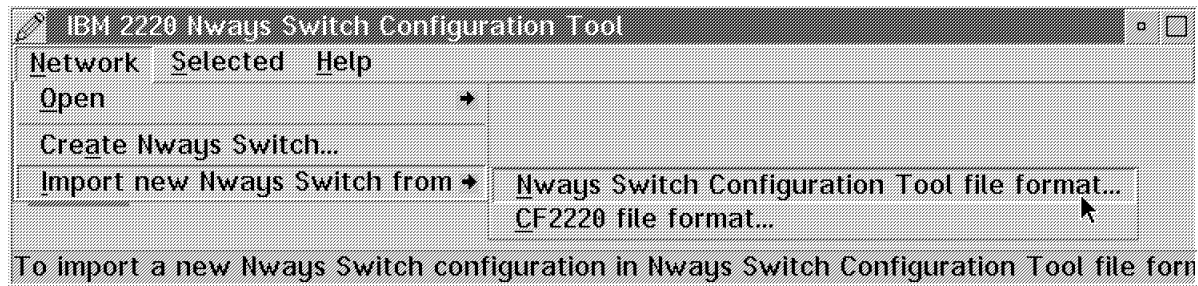


Figure 9. Select the Import mode.

- ___ 9. On *Import Window*
 - Select the **G** drive.
 - In *Directory* window, Double Click on **Config**.
 - In *File* window, select: **EXCFG.ZIP**.
- ___ 10. **Click on Import**.
 - Wait for completion message.
- ___ 11. **Click on OK**.

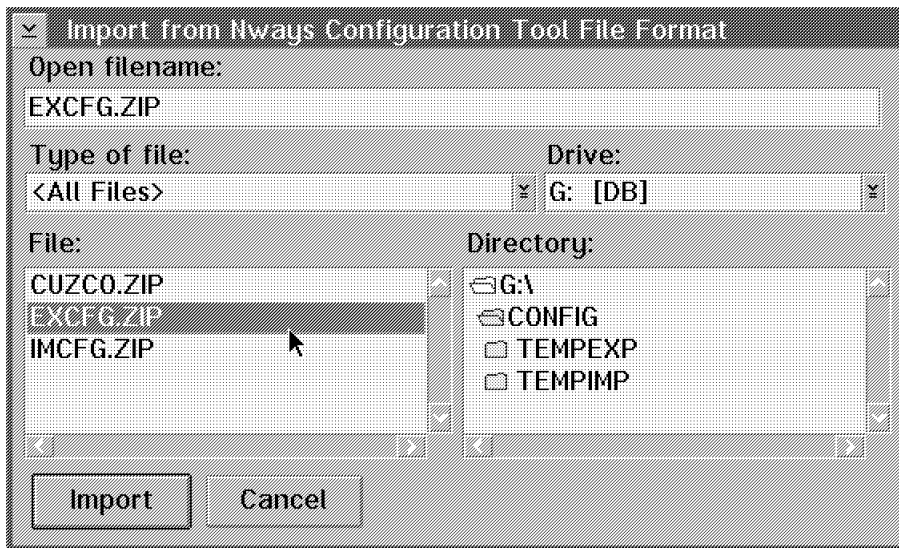


Figure 10. Import command.

10.3 Deactivate the TPA.

1. On the *Nways Switch* screen, Click on **View** from the menu Bar, then on **Expanded Tree View**.

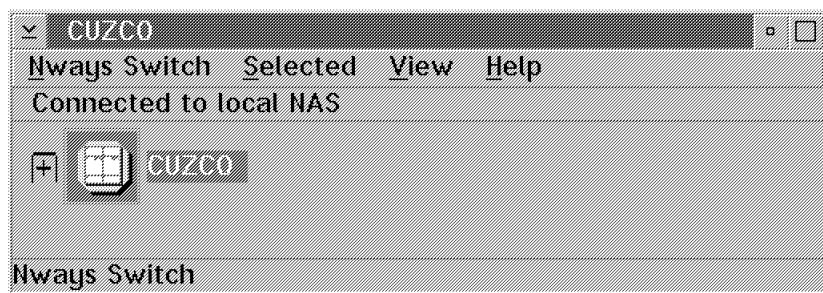


Figure 11. Nways Switch screen.

2. Ensure that the Adapter plugged in the identified slot is *Deactivated* (The Icon should be Green with a little white triangle) or display the status of the adapter by clicking on the icon with the right button of the mouse, then on **Open** , then on *Status*. State should be **Disabled**)

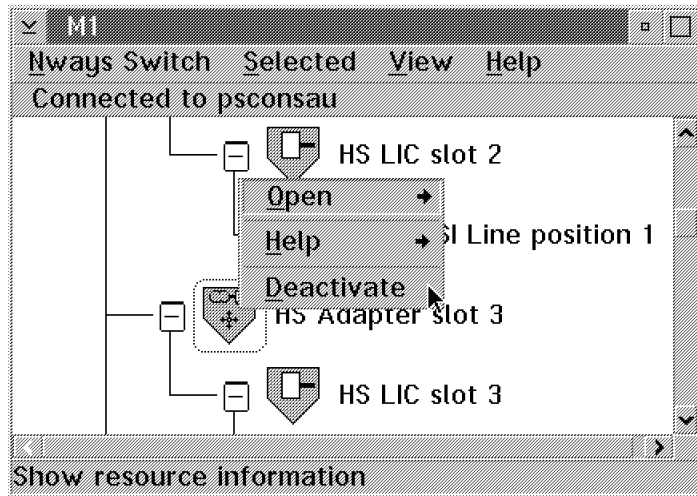


Figure 12. Deactivate TPA.

- ___ 3. If the TPA is not *Deactivated* or *Disabled*, ask the network operator to stop the traffic on the Lines driven by the TPA then, **Click** on the TPA Icon with the right button of the mouse, then **Click** on **Deactivate**.
- ___ 4. **Click** on **Yes** on the warning message.
- ___ 5. Wait for the completion message, **Click** on **OK**.
Wait for the small triangle on the TPA Icon.

10.4 Removing the TPA module.

- ___ 1. Open the front door of the Rack.
- ___ 2. Identify the TPA to be exchanged and ensure it is a LSA1.

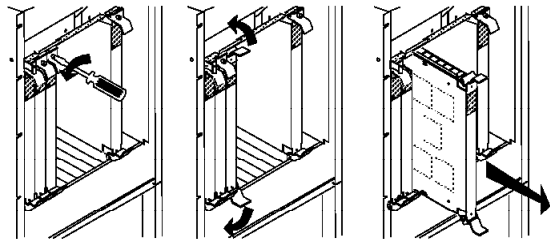


Figure 13. Module removal.

- ___ 3. Loosen the screw on the latches.
- ___ 4. Unlock the latches as shown.
- ___ 5. Remove the module from his location.

10.5 Installing the TPA module.

- ___ 1. Position the latches as shown,

PN 80G1453 11 of 18	EC E27799 08AUG95				
------------------------	----------------------	--	--	--	--

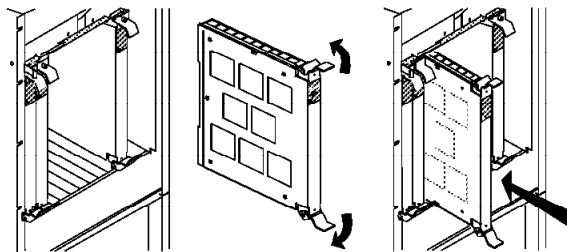


Figure 14. Module installation.

- ___ 2. Slide the module in place.
- ___ 3. Secure the module by locking the latches.
- ___ 4. Tighten the screw on the latches.

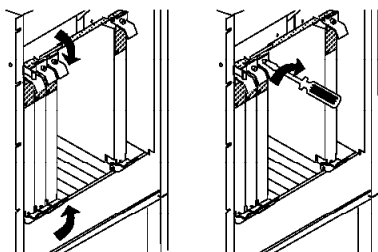


Figure 15. Secure a module.

11.0 Test procedures:

11.1 Check the status of the TPA.

- ___ 1. Ensure that the GREEN led is *Blinking* on the TPA you have installed.

Note: If not, remove and reinsert the module. If problem persist, go to the start page of the *IBM 2220 N Ways BroadBand Switch Service Guide SY33-2106..*

11.2 Update the N Ways Switch configuration.

- ___ 1. On the NAS desktop, **Double Click** on the **Nways Switch Configuration** Icon.

Note: If the *Expanded tree* window is displayed, move the window to see the Icon.

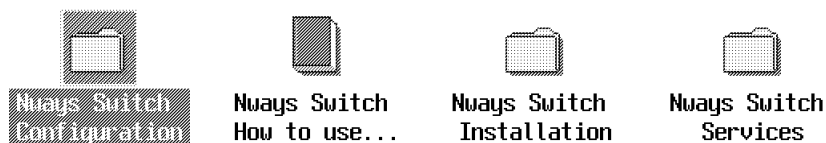


Figure 16. NAS desktop

- ___ 2. On the Icon View, **Double click** on **NCT** Icon. (N Ways Switch Configuration tool).

PN 80G1453 12 of 18	EC E27799 08AUG95				
------------------------	----------------------	--	--	--	--

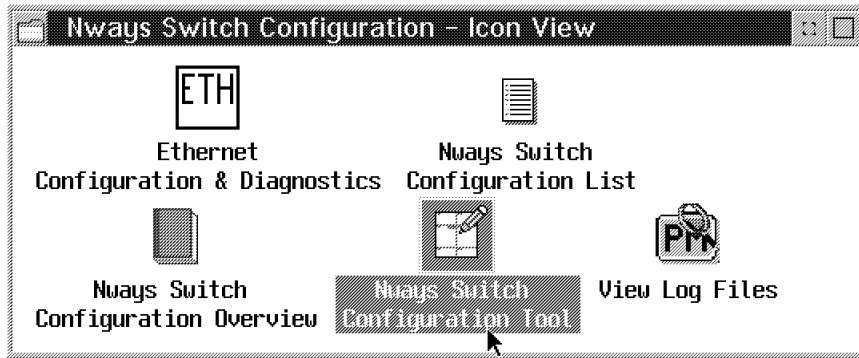


Figure 17. Nways Switch Configuration - Icon view.

- ___ 3. On the **NWays Switch Configuration Tool** window, **Double Click** on the NWays Switch Icon.

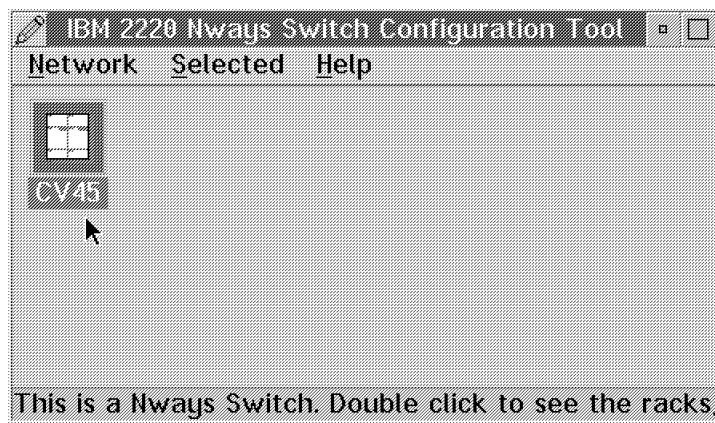


Figure 18. NWays Switch Configuration Tool.

- ___ 4. On the *NWays Switch - Rack view* window, **Double Click** on the **Rack** where you exchanged the TPA.(A for 500/300, B for 501)

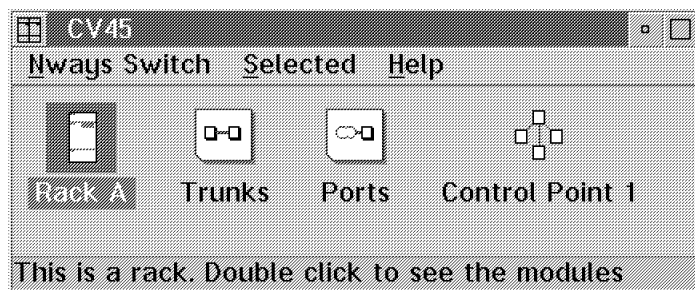


Figure 19. NWays Switch - Rack View.

- ___ 5. On the rack window, **Click** on the Icon LS1, of the slot where you exchanged the TPA, then **Click** on **Selected** on the Menu Bar.

PN 80G1453 13 of 18	EC E27799 08AUG95				
------------------------	----------------------	--	--	--	--

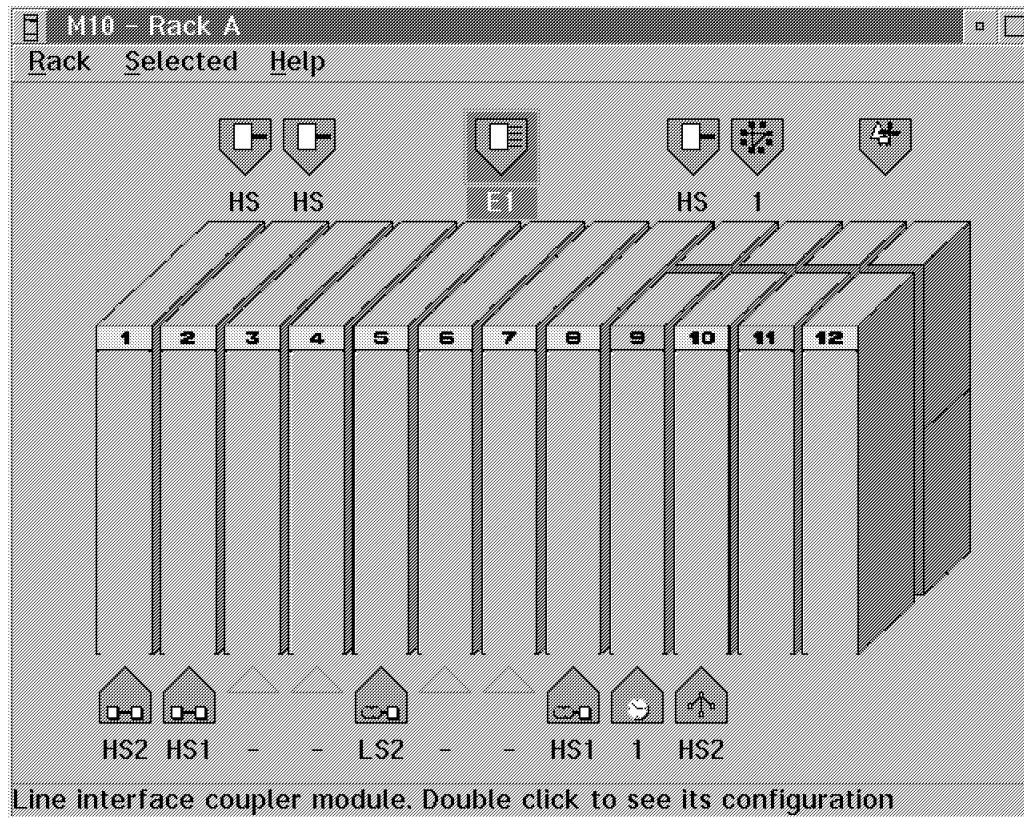


Figure 20. Rack Window.

- ___ 6. **Click** on **Open Configuration**
The radio button for LSA type 1 is ON.
- ___ 7. Click on the radio button for LSA type 2 , then **Click** on **OK**.
- ___ 8. Close the *Rack Window*. (Figure 20)
- ___ 9. Close the *NWays Switch - Rack View* window, (Figure 19 on page 13)

11.3 Export the Working Configuration

- ___ 1. On the *NWays Switch Configuration Tool* window, **Click** on **Selected** on menu bar, then **Click** on **Export**.

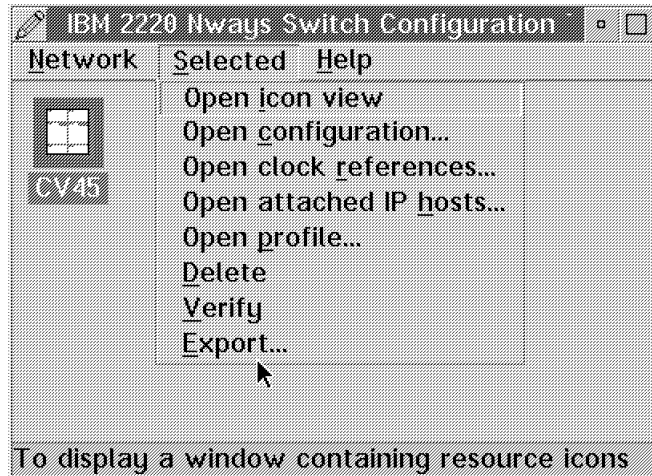


Figure 21. Export the Working configuration.

___ 2. On the export window :

Select the **G** drive.

In *Directory* window, Double click on **Config**.

In file window, select **IMCFG.ZIP**

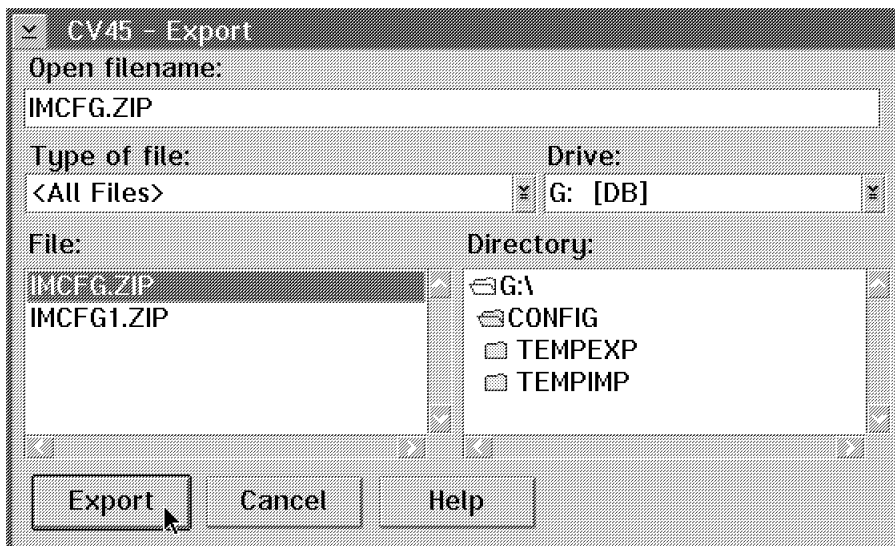


Figure 22. Export command.

___ 3. Click on **Export**

Wait for the completion message.

___ 4. Click on **OK**.

___ 5. Close the *NWays Switch Configuration Tool* window. (Figure 21.)

___ 6. Close the *NWays Switch Configuration -Icon View* (Figure 7 on page 8.)

11.4 Import the Working Configuration

1. On the *Nways Switch* screen Click on **NWays Switch** on the Menu Bar,

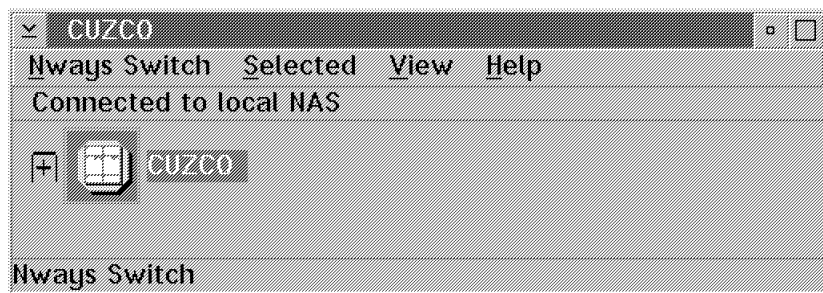


Figure 23. Nways Switch screen.

2. Click on **Import Configuration**, then on **From Disk**

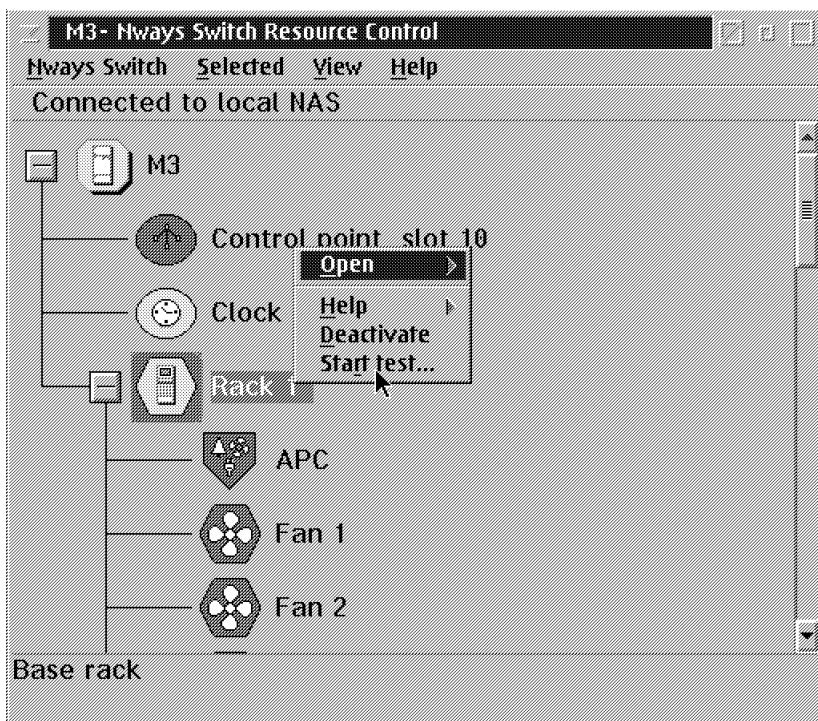


Figure 24. Import Working configuration.

3. Wait for the completion message . Click on **OK**.

11.5 Activate the new configuration.

1. Click on the Nways Switch Icon, then on **Selected** on the Menu Bar.

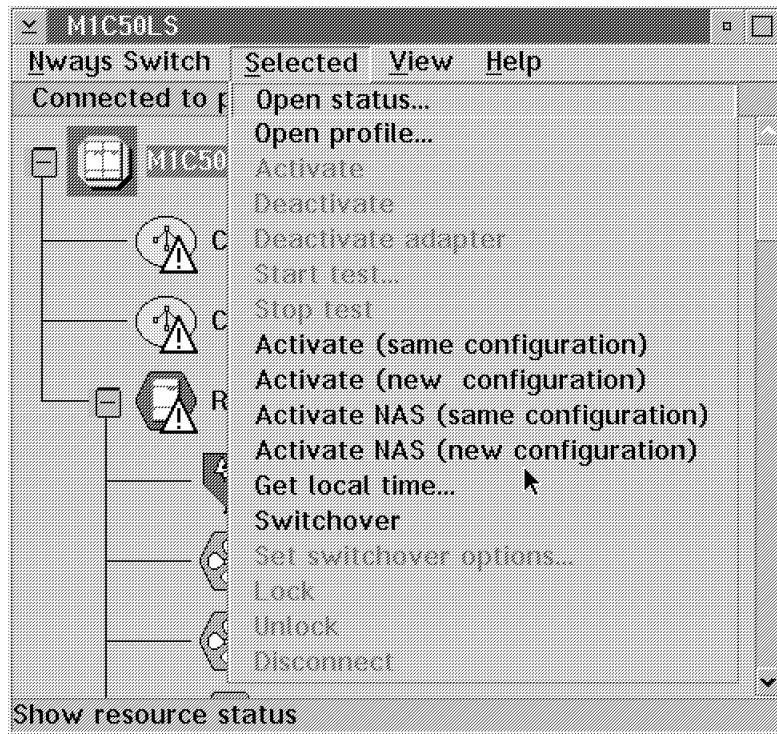


Figure 25. Activate the NAS

- ___ 2. **Click on Activate NAS (new Configuration)**
Wait for completion message.
- ___ 3. **Click on OK**
A NAS reboot will occur.
- ___ 4. Wait for completion message.
The new adapter will be automatically re-activated.

11.6 Making the 2220 ready

- ___ 1. Ask the Network Operator to restart the traffic on the exchanged TPA.
- ___ 2. Close the front and the Rear rack doors.
- ___ 3. The network operator should save the new configuration at the network mangement focal point.

After Installation (steps 12-15)

12.0 Field Updating

None.

PN 80G1453 17 of 18	EC E27799 08AUG95				
------------------------	----------------------	--	--	--	--



13.0 Publications Update

None.

14.0 Parts Disposition

All replaced/removed parts become the property of IBM. You **MUST RETURN** these parts following the instructions given on the Returned Material Equipment Report (RMER) provided with this FFBM.

15.0 Machine Records

- Install the new **MACHINE HISTORY** supplied.
- Report installation and quality to existing procedures.

End of instructions.

PN 80G1453 18 of 18	EC E27799 08AUG95				
------------------------	----------------------	--	--	--	--